



for all your shielding projects.

[www.nuclear-shields.com](http://www.nuclear-shields.com)

# Shielded Cask

## Handling instructions



**NUCLEAR  
SHIELDS**

# Handling Instructions

## Caution!

- Do not lift the entire shielded cask by lifting the top lid.

## Shielded cask instructions

1. Lifting the shielded cask / top lid
2. Lifting the shielded cask with a forklift
3. Sealing the cask with pins
4. Securing the cask to the trolley



SWB1120-KNPP

Revision	Modified on	Modified by	Modifications
Rev A	21-Mar-2019	Rens Korsten (NS)	Handling instructions created





## 1. Lifting the shielded cask / top lid



Attach D-clamps to all of the four points of the container or lid.

Do not lift the entire cask via the lid!



Attach a four way chain to all four D-clamps.

## 2. Lifting the shielded cask with a forklift

Use an appropriate forklift to lift the shielded cask. The tare weight can be found on the sides of the shielded cask.







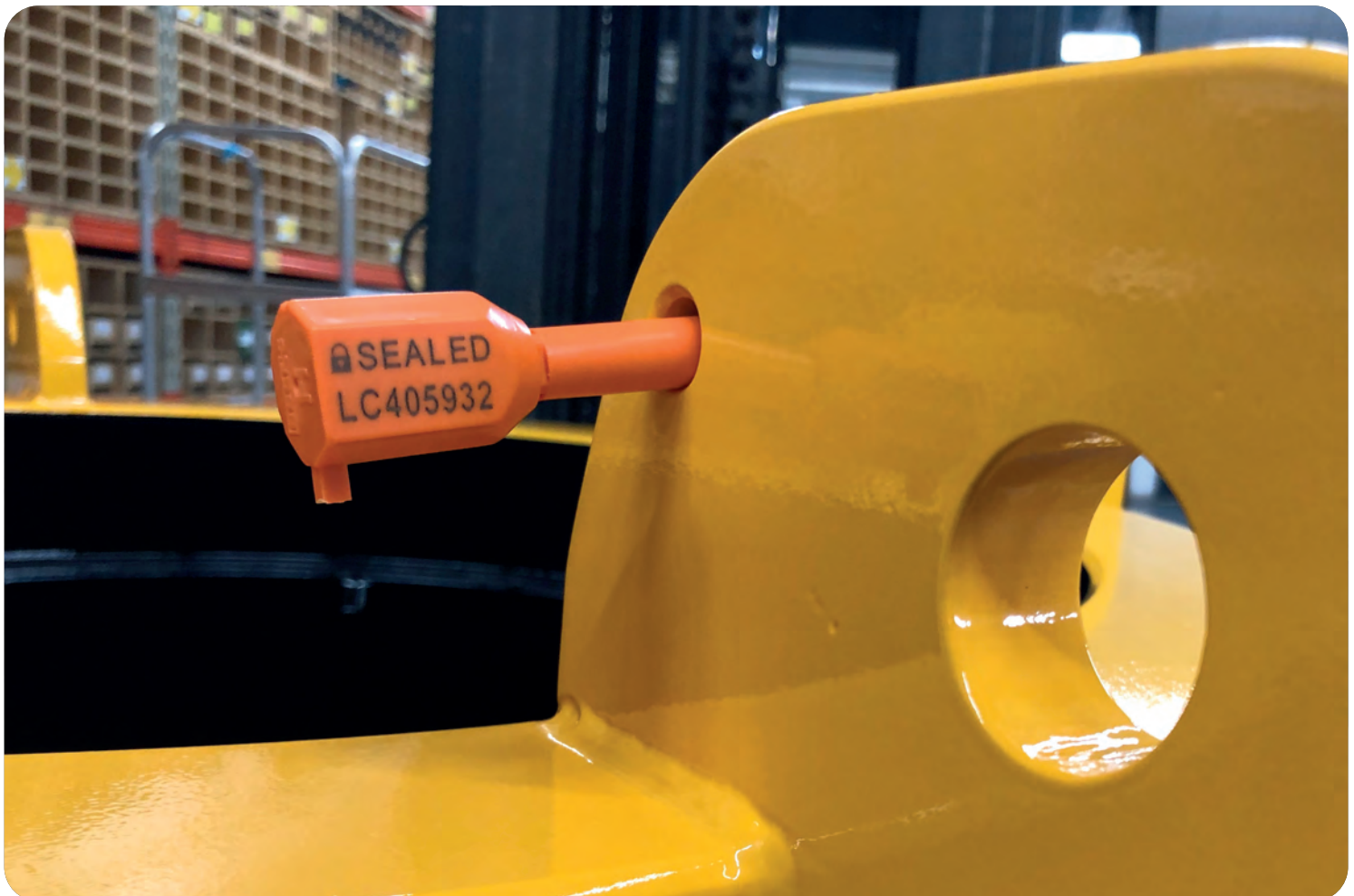
### 3. Sealing the cask with bolt lock seals



Attach the bolt seals through the lid and base of the cask.



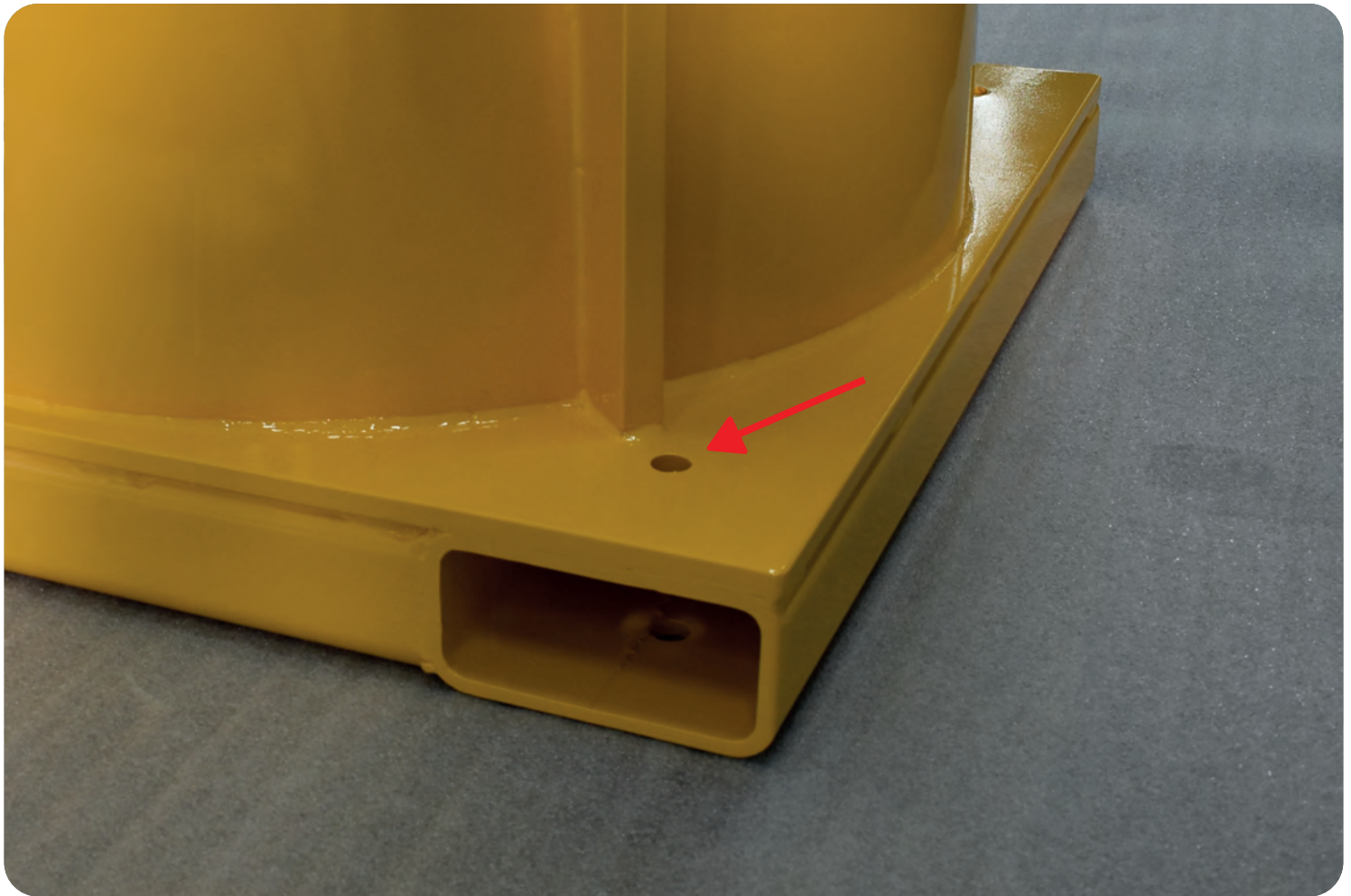
Remove the sealing pins with a bolt cutter.





#### **4. Securing the cask to the trolley**

The holes in each corner of the cask are meant to bolt the shielded cask to the trolley.





# NUCLEAR SHIELDS

## Sales & Aftersales

### **Nuclear Shields B.V.**

Akkervoortweg 5  
5827AP, Vortum-Mullem  
The Netherlands

Tel. nr. : +31 (0)485561140  
E-mail : [info@nuclear-shields.com](mailto:info@nuclear-shields.com)  
Web : [www.nuclear-shields.com](http://www.nuclear-shields.com)  
VAT : NL857196881B01

### **ABN AMRO BANK**

IBAN : NL94ABNA0246385561  
BIC : ABNANL2A

### **Chamber of Commerce Eindhoven**

reg. nr. : 67846769

## Manufactured by

### **Nuclear Fields International B.V.**

Akkervoortweg 5  
5827AP, Vortum-Mullem  
The Netherlands

Tel. nr. : +31 (0)485561111  
E-mail : [info@mullekom.nl](mailto:info@mullekom.nl)  
Web : [www.nuclearfields.com](http://www.nuclearfields.com)  
VAT : NL004068592B01

### **ABN AMRO BANK**

IBAN : NL45ABNA0640554091  
BIC : ABNANL2A

### **Chamber of Commerce Eindhoven**

reg. nr. : 16036782

